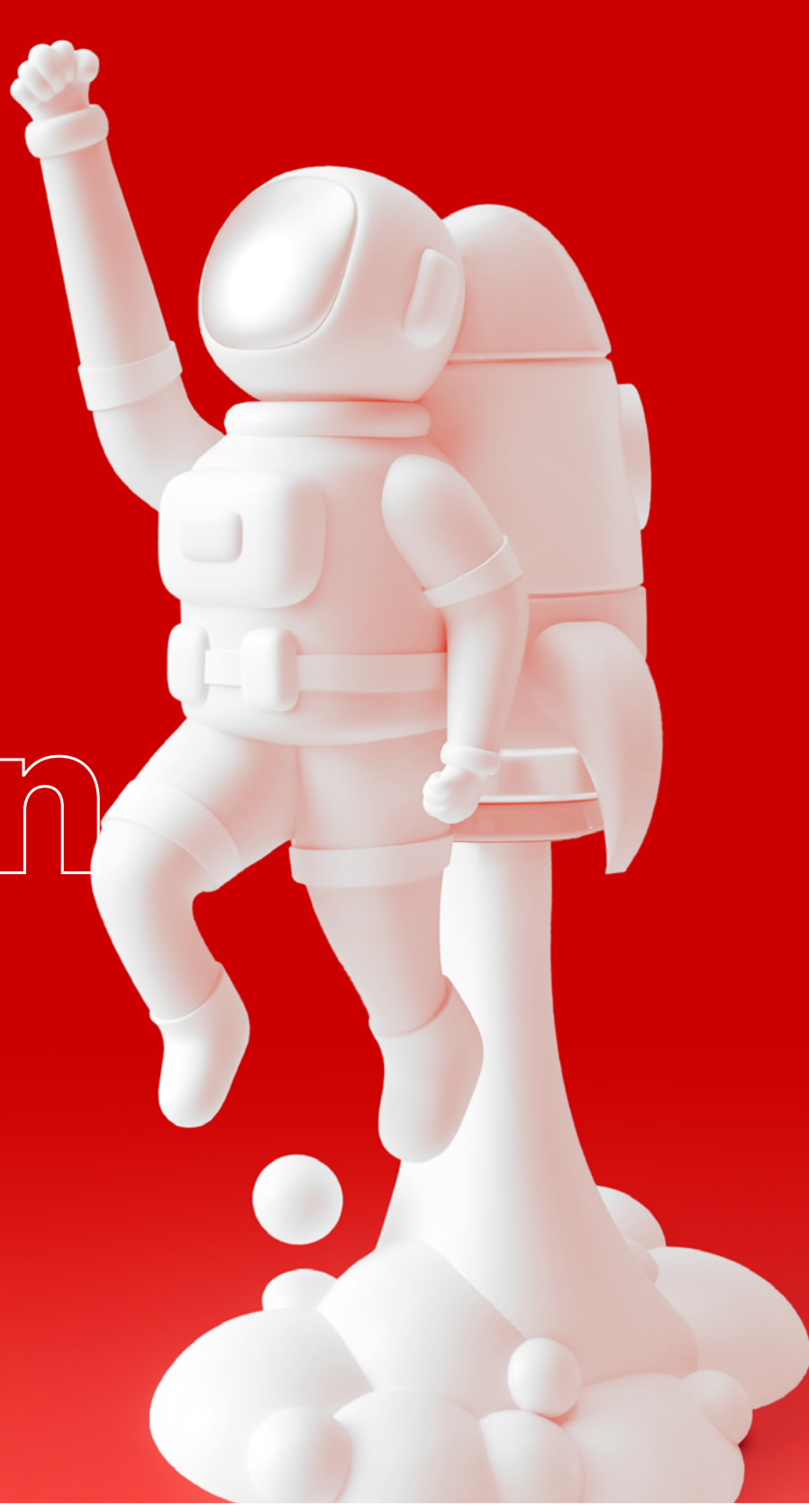


# Accelerate your Cloud transformation journey.



## What is digital Cloud transformation?

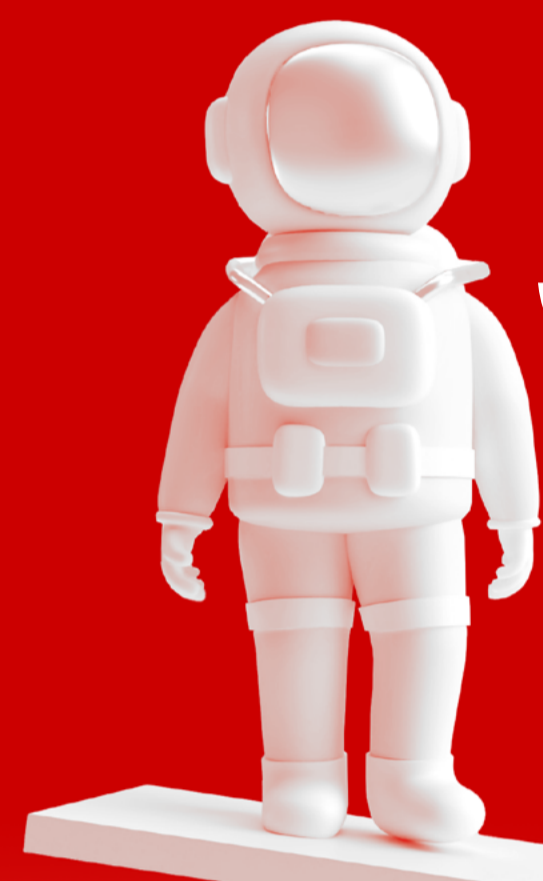
Cloud transformation is at the forefront of every organization's business strategy. In fact, 94% of executives say they have increased focus to modernize approach to cloud within the last year! But why now?

There's more pressure on businesses than ever before to meet increased demand, adapt to new customer service requirements, and keep costs down. Turning to the Hybrid Cloud can make all this possible.

The implementation of digital technologies can help accelerate progress on the journey of cloud and achieve the enterprise goals such as financial returns, workforce diversity, and environmental targets by 22%.<sup>2</sup>



**54%** of companies worldwide said they are prioritizing digital transformation as a tech initiative, while 49% are prioritizing cybersecurity.<sup>3</sup>



## Mindtree and Hitachi Vantara offerings.

Mindtree is a leading business technology partner helping clients harness the potential of digital technologies. Specialising in TTH, Retail, BFSI, and CMT, Mindtree has generated consolidated revenues of \$1.4bn over the past year, across 4 geographies.

Hitachi Vantara empowers clients to discover their unparalleled competitive advantage to rapidly scale their digital business. With a commitment to a greener future, and a belief in the power of digital technologies and data-driven solutions, we are the leaders of intelligent innovation.

Mindtree and Hitachi Vantara's partnership journey has grown over the years. Together, they can help you on your digital transformation journey, offering proven, scalable solutions for hybrid cloud, giving you the power to:

### Lower cost baselines

with a hyper-automated unified IT operating model, with enterprise IT infrastructure, applications, and end-user support.



### Protect your most critical data

with enterprise-grade cybersecurity, built with cutting-edge resiliency to secure your business.



### Streamline your business operations

with a modernized and automated collection enterprise IT tool.



### Drive efficiency and deliver exceptional customer experience

with automated quality engineering and continuous testing.



### Create, connect, and orchestrate

every aspect of your digital infrastructure, wherever you are.



### Enhance business productivity

with a solution capable of marrying your strategy, business intelligence, and back-office systems.



### Experience results quicker,

mitigate risks, and lower total cost of ownership with aligned IT capabilities and value streams.



### Help to achieve a public cloud experience on a private cloud,

through the infrastructure as a service offering with the ease of service management.



## Praveen Sawkar

Director – Global Alliances

praveen.sawkar@hitachivantara.com

**Get in touch.**

## Ashish Sabale

Head, Cloud and Service Line Markets

ashish.sabale@mindtree.com

## WE ARE HITACHI VANTARA

Hitachi Vantara solves digital challenges by guiding you from what's now to what's next. Our unmatched industrial and digital capabilities benefit both business and society.

## Hitachi Vantara

**Corporate Headquarters**  
2535 Augustine Drive  
Santa Clara, CA 95054 USA  
hitachivantara.com | community.hitachivantara.com

**Contact Information**  
USA: 1-800-446-0744  
Global: 1-858-547-4526  
hitachivantara.com/contact

© Hitachi Vantara LLC 2022. All Rights Reserved. HITACHI and Lumada are trademarks or registered trademarks of Hitachi, Ltd. All other trademarks, service marks and company names are properties of their respective owners. Hitachi Vantara, a subsidiary of Hitachi, Ltd. (TSE: 6501), turns data-rich businesses into data-driven ones. For more information, please visit hitachivantara.com.

1. <https://www.hitachivantara.com/en-us/pdf/hcc/infographic/hitachi-consulting-dx-ig.pdf>

2. <https://financesonline.com/digital-transformation-statistics/>

3. <https://financesonline.com/digital-transformation-statistics/>

HV-TWG-MindtreeandHitachiVantarainfographic-21Aug22