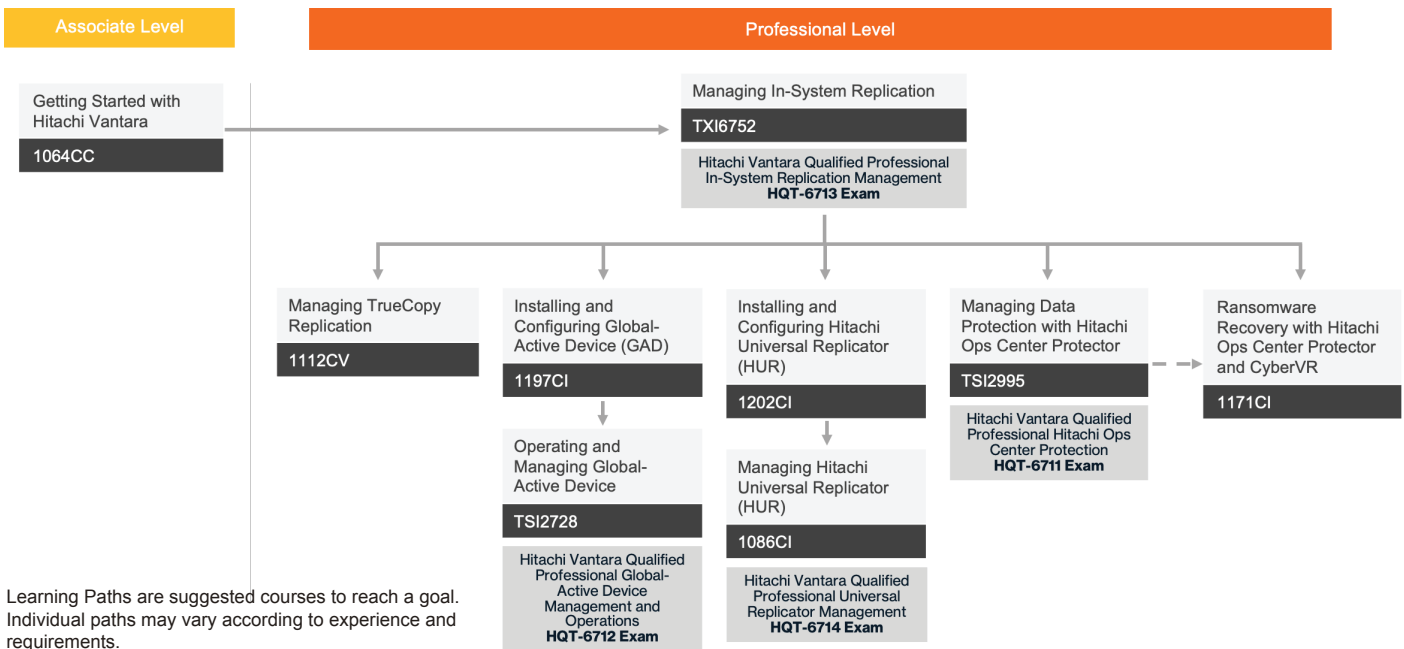


Block Storage Learning Path

Business Continuity Engineer

Protect your data with Hitachi Vantara storage management software

The Business Continuity Engineer learning path will help you acquire the skills you need to protect, replicate and migrate data with storage from Hitachi Vantara.



Learning Paths are suggested courses to reach a goal. Individual paths may vary according to experience and requirements.

Getting Started With Hitachi Vantara

1064CC | Free Online

Get up-to-speed fast with foundational courses for our most popular products and solutions including Hitachi Ops Center, Hitachi Content Platform, Object Storage, Storage Concepts, and more. This library is available, free of charge, to all Hitachi Vantara customers.

Managing In-System Replication

TXI6752 | 2-Day ILT/vILT

Receive in-depth knowledge on specifications, operations, and troubleshooting of the Hitachi In-System replication software bundle. The course also covers how to manage replication with Command Control Interface (CCI) software. Comprehensive hands-on practice is included to build necessary

skills to configure several in-system replication scenarios using Hitachi Device Manager Storage Navigator (HDVM-SN), RAID Manager CCI, and RAIDCOM commands.

*This course prepares you for the [Hitachi Vantara Qualified Professional - In-system replication management \(HQT-6713\) exam](#).**

Completion of this course will earn you a [Hitachi In-System Replication Management](#) digital badge.

Managing TrueCopy Replication

1112CV | Online

This course provides information on in-depth specifications, operations, and troubleshooting of Hitachi TrueCopy Heterogeneous Remote Replication. The emphasis of this course is placed on managing replications with Command

Control Interface (CCI) software and Hitachi Ops Center Protector features.

Installing and Configuring Global-Active Device (GAD)

1197CI | 1-Day ILT/vILT

This course provides information on implementing global-active device (GAD) using the Hitachi Ops Center GUI and command control interface (CCI). It will familiarize you with GAD architecture, features, and concepts. This course includes hands-on lab activities to give you practice on how to configure GAD using Hitachi Ops Center Administrator and Protector, create virtual storage machines, and set up GAD using CCI and manage GAD pairs.

Completion of this course will earn you a [Installing and Configuring Global-Active Device](#) digital badge.

Operating and Managing Global-Active Device

TSI2728 | 3-Day ILT/vILT

Learn to configure global-active device (GAD) using command control interface (CCI) and Hitachi Command Suite (HCS) GUI. Familiarize yourself with GAD architecture, features and concepts. This course includes hands-on lab activities to configure HCS and CCI server, create virtual storage machines, set up Hitachi Replication Manager, pair management server and manage GAD pairs.

*This course prepares you for the [Hitachi Vantara Qualified Professional – Global-Active Device Management and Operations \(HQT-6712\)](#) exam.**

Completion of this course will earn you a [Global-Active Device Operation and Management](#) digital badge.

Installing and Configuring Hitachi Universal Replicator (HUR)

1202CI | 1-Day ILT/vILT

Learn how to implement Hitachi Universal Replicator (HUR) using the Hitachi Ops Center GUI and command control interface (CCI). This course will familiarize you with HUR architecture, features, and concepts. It includes hands-on lab activities and you will also have an opportunity to create virtual storage machines, set up HUR using CCI, and manage global-active device (GAD) pairs.

Completion of this course will earn you an [Installing and Configuring Universal Replicator](#) digital badge.

Managing Hitachi Universal Replicator (HUR)

1086CI | 3-Day ILT/vILT

This course covers the use of Hitachi Universal Replicator (HUR) in two and three data center (2DC and 3DC) configurations, as well as the Universal Replicator Delta Resync function in a global-active device environment. Students will learn how to set up a HUR configuration using CLI, Storage Navigator, and Hitachi Ops Center Protector software and includes hands-on labs.

*This course prepares you for the [Hitachi Vantara Qualified Professional - Universal Replicator Management \(HQT-6714\)](#) exam.**

Managing Data Protection with Hitachi Ops Center Protector

TSI2995 | 3-Day ILT/vILT

Get training on how to use Hitachi Ops Center Protector to orchestrate and manage Hitachi replication software products such as Hitachi ShadowImage® and Hitachi Thin Image. The course includes a description of the major components for Protector orchestration such as Node, Policies and Data Flows. It also includes a review of storage, host and application-based operations, such as snapshot, backup and others.

Completion of this course will earn you a [Hitachi Ops Center Protector Management](#) digital badge.

*This course prepares you for the [Hitachi Vantara Qualified Professional - Ops Center protection \(HQT-6711\)](#) exam.**

Ransomware Recovery with Hitachi Ops Center Protector and CyberVR

1171CI | 2-Day ILT/vILT

Use Hitachi Ops Center Protector and VM2020 CyberVR to quickly recover an entire application stack, including data, compute, network, and application. Learn the components and capabilities of CyberVR and how to use CyberVR to create Thin Digital Twins which support a variety of use cases, such as penetration testing, security control validation, forensics, and ransomware recovery testing. The course includes hands-on lab activities designed to build the skills necessary to use CyberVR as the key orchestration layer for these products.

Completion of this course will earn you a [Ransomware Recovery with VM2020 CyberVR and Hitachi Ops Center Protector](#) digital badge.

* This closed-book, proctored qualification test is available using the [Kryterion Webassessor system](#), either as online-proctored or on-site at Kryterion testing centers.

Hitachi Vantara

Corporate Headquarters
2535 Augustine Drive
Santa Clara, CA 95054 USA
Hitachivantara.com | community.hitachivantara.com

Contact Information
USA: 1-800-446-0744
GLOBAL: 1-858-547-4526
Hitachivantara.com/contact



HITACHI is a registered trademark of Hitachi, Ltd.
All other trademarks, service marks, and company names are properties of their respective owners.