

DIGITAL TRANSFORMATION

How to Streamline Your Infrastructure to Enable Organizational Agility

Environments are Still Diverse, but Headed Toward the Cloud

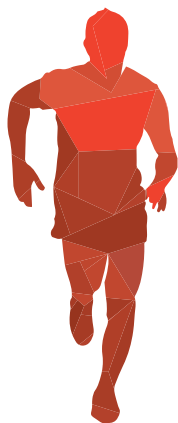
Workloads in cloud environments are expected to increase from **62.5%** to **67.4%** in two years

	TODAY	IN 2 YEARS
SaaS	15.0%	15.3%
IaaS/Public Cloud	14.4%	15.2%
Hosted Private Cloud	14.7%	16.7%
On-premise Private Cloud	18.4%	20.2%
Off-Premise Non-Cloud	12.9%	12.0%
On-Premise Non-Cloud	24.6%	20.6%

IT Organizations Must Transform to Remain Competitive

SHIFTING TRENDS

Containers continue to rise in prominence. **Improved resource sharing and efficiency** (compared to virtual machines), and the **ability to rapidly deploy across disparate platforms** are the drivers.



Converged and hyperconverged infrastructures are growing due to the quick, consistent provision of resources, and reduced management and maintenance concerns. **In the world of digital transformation, it isn't about big versus small as it is, the agile outmaneuvering the rigid.**

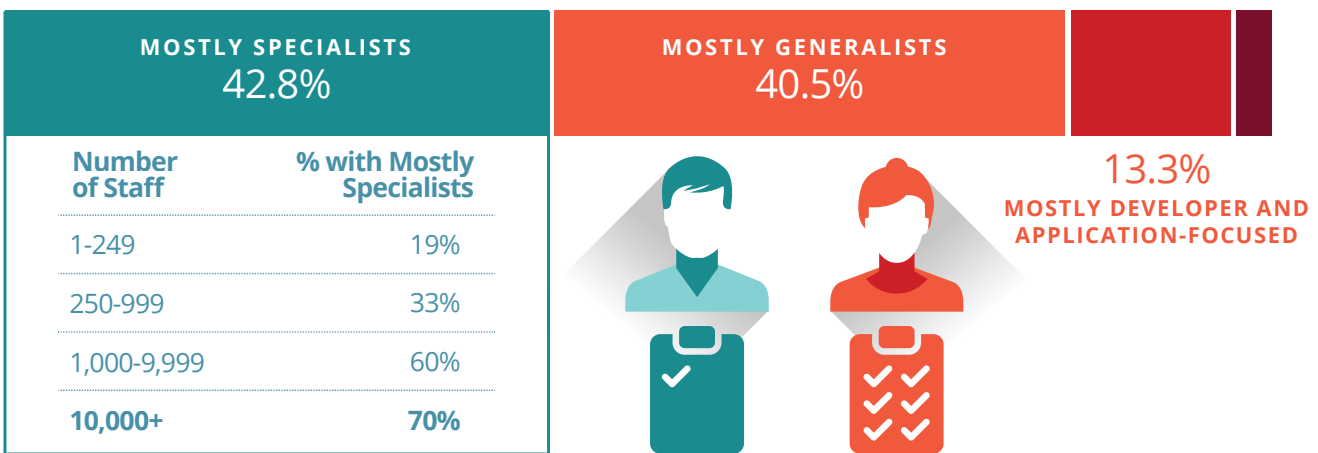


Simplicity Key in Next-Gen Deployments

Ease of use is rarely a major driver in traditional IT environments. Moving forward, simplified deployments, maintenance and support are projected as key areas of differentiation for infrastructure offerings.

An even split between generalists and specialists.

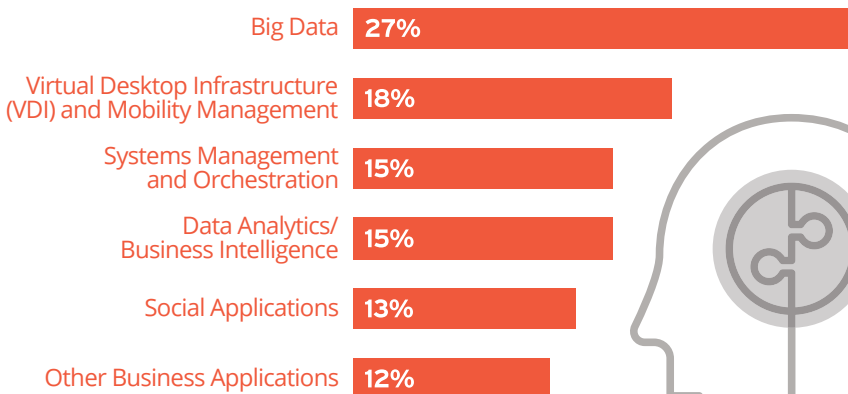
Source: 451 Research Voice of the Enterprise: Storage, Q2 2016



A Look Ahead

Big data and analytics are key areas of future growth, with scalability a key concern when deployed at a production level.

With the rise of digital transformation, organizations will seek high performance and accelerated time to insight as they strive to make more informed decisions to remain competitive.



Source: 451 Research, Voice of the Enterprise: Storage, Q2 2016, n=440



451 Research is a preeminent information technology research and advisory company. With a core focus on technology innovation and market disruption, we provide essential insight for leaders of the digital economy. More than 100 analysts and consultants deliver that insight via syndicated research, advisory services and live events to over 1,000 client organizations in North America, Europe and around the world. Founded in 2000 and headquartered in New York, 451 Research is a division of The 451 Group.

WWW.451RESEARCH.COM

Accelerate Business Transformation With Next-Gen Mission Critical Infrastructure: Converged and Hyperconverged (HCI)
www.hitachivantara.com/hyperconverged