

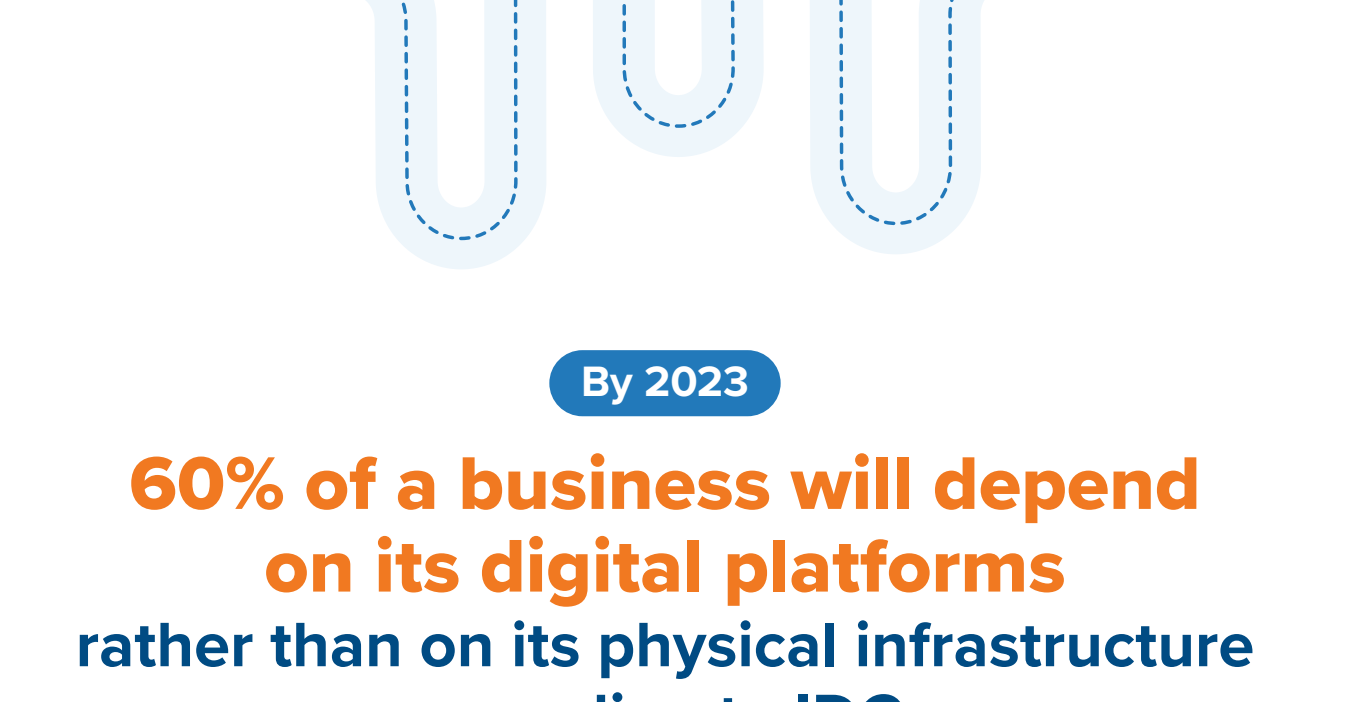


# For SAP Database and Cloud Migration, Don't Go It Alone

## Digital Transformation and SAP Modernization Are Intertwined

Today

Many SAP customers have embarked on the challenging journey toward **modernizing their SAP landscapes.**



By 2023

**60% of a business will depend on its digital platforms** rather than on its physical infrastructure according to IDC.

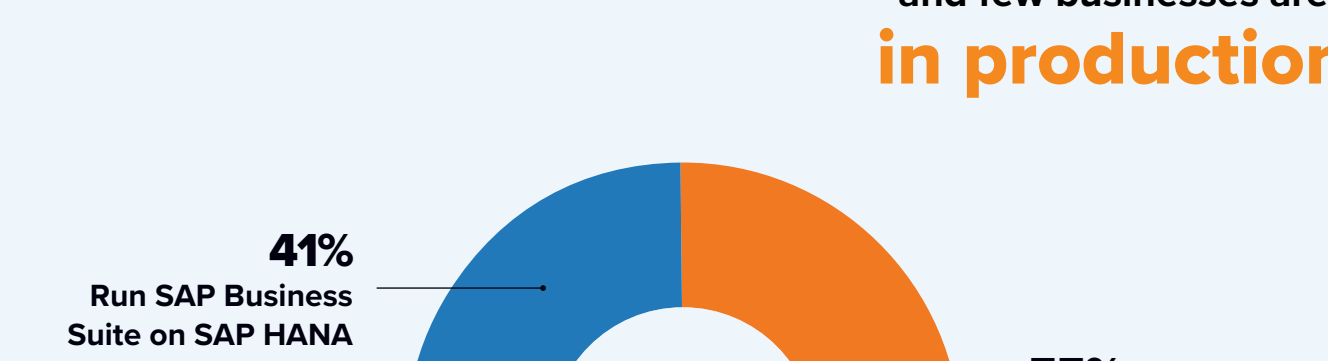
Digital technologies enable businesses to:

- Identify new opportunities for innovation** (Lightbulb icon)
- Conduct research that can lead to disruptive product development** (Magnifying glass icon)
- Deliver new products and services faster** (Target icon)
- Create digital products adjacent to physical products, so-called "digital twins"** (Bicycle icon)
- Improve customer focus with digital strategies for responsiveness and quality of service** (Person with arrows icon)
- Using AI, enhance productivity for business and manufacturing** (AI icon)

## SAP is Driving Customers to Perform Multiple Migrations

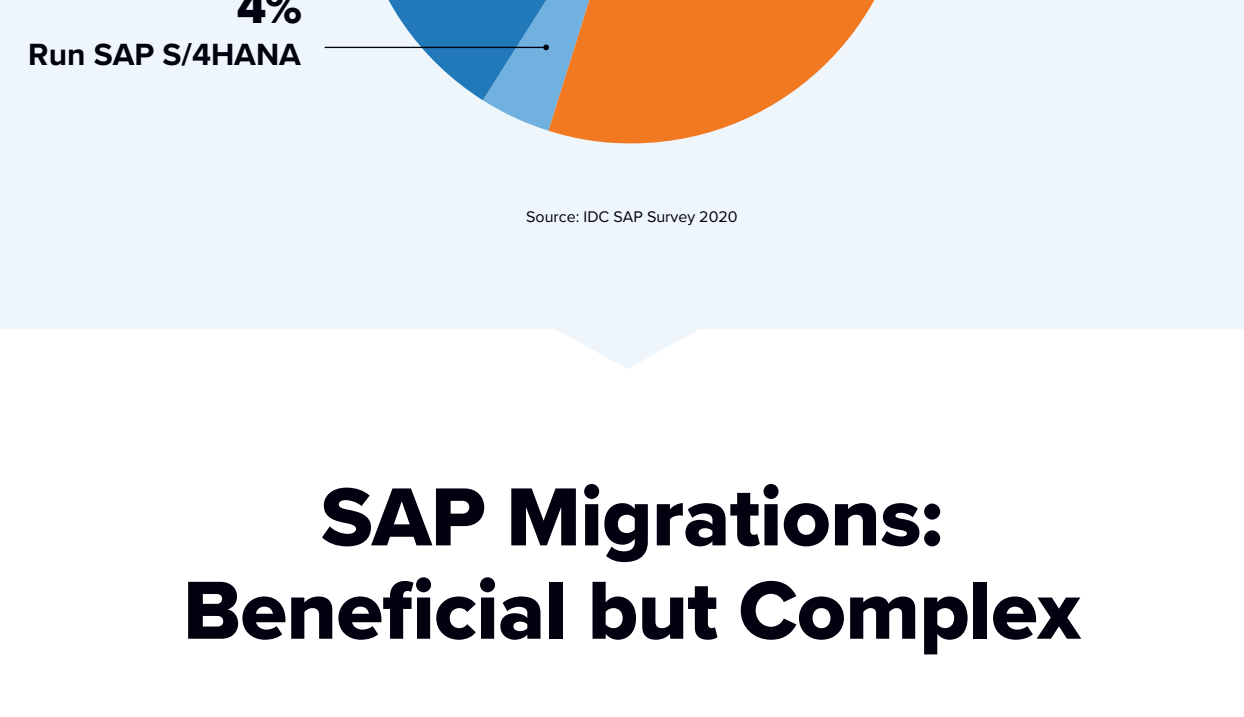
Migration to SAP HANA is well under way – a shift to be completed by 2027.

Yet two-thirds of businesses **have not even reached the proof-of-concept stage on SAP S/4HANA**



Source: IDC Special Report - Infrastructure Adoption Trends for SAP and SAP HANA

and few businesses are **in production**



Source: IDC SAP Survey 2020

## SAP Migrations: Beneficial but Complex

SAP transformations offer opportunities to:

- Simplify** (Funnel icon)
- Increase agility** (Gears icon)
- Be adaptable** (Network icon)

Yet migrations can be:

- Complex** (Maze icon)
- Costly** (Dollar sign icon)
- Disruptive** (Lightbulb with gear icon)

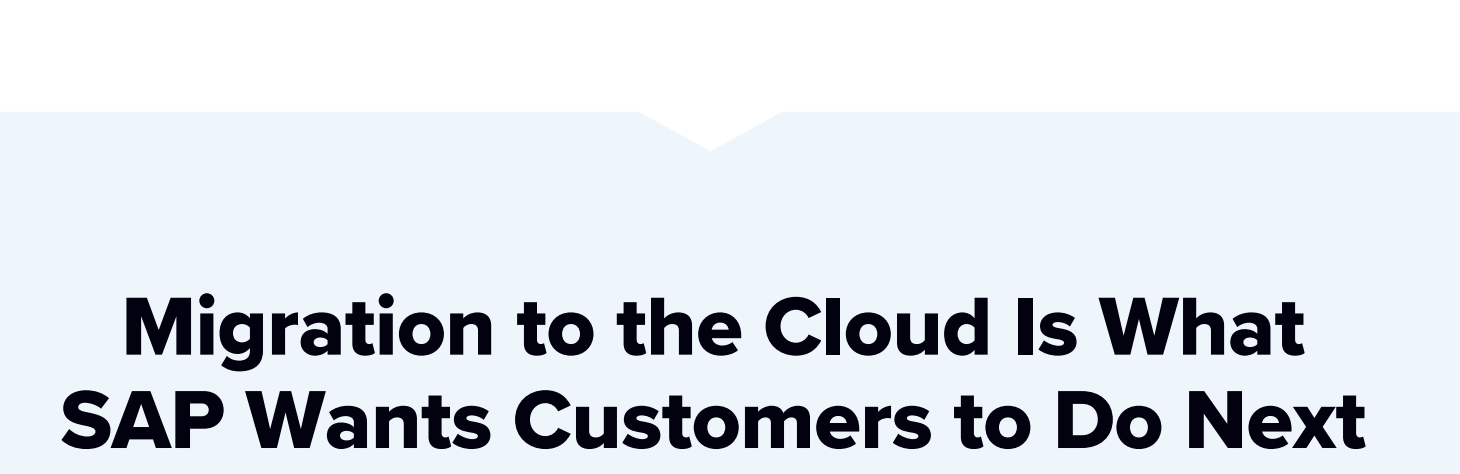
The biggest challenges to SAP migrations include:



Source: IDC SAP Survey 2020

**SAP HANA also requires new, SAP-certified hardware.**

The lifecycle of on-premise hardware is 5 years, so time is running out for one more hardware lifecycle with non-HANA databases before 2027.



## Migration to the Cloud Is What SAP Wants Customers to Do Next

But cloud migration for SAP is complex, and often takes longer and costs more than anticipated. Cloud migration is perceived as:

**High-risk since it is irreversible**



**Lacking in:**

- Migration tools** (Circuit icon)
- Staff with the right skill sets** (Person with checkmarks icon)
- Support** (Group of people icon)

Source: IDC SAP Survey 2020

## Don't Go It Alone on SAP Migrations

Businesses should seek support from vendors, providers, consultants and/or system integrators to:

**Perform a comprehensive ROI evaluation**

**Decide on deployment scenarios**  
Which SAP workloads should remain on-premise, which should go to an IaaS provider or MSP, and which can be consumed as SaaS?

**Size the SAP landscape**  
What are the future infrastructure requirements after modernization and consolidation?

**Complete the actual migration to SAP HANA, SAP S/4HANA, and/or the cloud**  
This requires a dedicated team of experts, including vendors.

**Message from the Sponsor**  
Learn more about SAP HANA modernization solutions from Hitachi Vantara