



# Customer Learning Catalog Hitachi Vantara Global Learning

Version 17.10 | Global



The Learning Catalog

> Welcome

This learning catalog is a collection of learning path illustrations to guide you in identifying courses suitable for fulfilling your learning requirements. The collection represents all offerings aligned with the Global Hitachi Vantara Global Learning strategy for training as set in collaboration with all Hitachi Vantara business functions.

All training offerings, and their associated Certification credentials where available, are structured in role based order to enable you to associate with, and identify, the specific training road-map that addresses your required skills. In addition, they are grouped to best fit our product and solution offerings for your further ease of reference.

All sections of the catalog are hyperlinked and contain deeplinks to the Learning Center to access further information, such as course descriptions and global schedules.

For any questions and assistance in helping you map your needs to available offerings please do not hesitate to contact your local Global Learning training manager.

With best wishes  
Your Hitachi Vantara Global Learning team





The Learning Catalog

> About

We trust that you will find this a valuable tool to guide you through your Hitachi Vantara learning roadmap. All learning offerings are grouped in sections which are hyperlinked to facilitate your browsing and training selections. By selecting the main tabs further offerings organized in a menu format will appear, within which all the relevant Learning Assets will be displayed.

Click on any Main-Menu Tab to view Sub-Menu topics →  
Click on any Sub-Menu to access the relevant Learning Assets →

Home Products Solutions Certification Add. Info

Foundation Data Protection File & Content Compute Platform Networking

The last section of the document, entitled "Additional Info", contains very useful reference material including how to access the Hitachi Vantara Learning Center (our Learning Management System), how to identify dates and register for courses, as well as access the course descriptions and Hitachi Vantara Global Learning contact details.

With best wishes and looking forward to being of assistance,  
Your Hitachi Vantara Global Learning team



Home



Products



Solutions



Certification



Add. Info

Foundation

Storage Systems

Storage Management

Data Protection

File & Content

Compute Platform

Infrastructure

All Technical Roles

> Foundation Level Training

CCI0110 - Hitachi Vantara Storage Concepts 2 day ILT 2 Training Units	TCI2004 - Transitioning to Hitachi Storage Systems 2 day ILT 2 Training Units	TCI2211 - Hitachi Vantara Network Fundamentals 5 day ILT 5 Training Units
CCI1986 - Understanding Mainframe Environments 5 day ILT 5 Training Units	THI2264 - Hitachi Vantara Storage Foundations 5 day ILT 5 Training Units	<div style="border: 1px solid black; padding: 5px;"> <div style="background-color: black; color: white; padding: 2px; writing-mode: vertical-rl; transform: rotate(180deg);">AMERICAS ONLY</div>         THI0430- Hitachi Vantara Storage Boot Camp          10 day ILT          10 Training Units          CCI1180- SAN Boot Camp          5 day ILT          5 Training Units       </div>



Home



Products



Solutions



Certification



Add. Info

> Hitachi Storage Systems

AMERICA ONLY	THI0430- Hitachi Vantara Storage Boot Camp 10 day ILT				10 Training Units
	EMEA / APAC	TSI1949 - Basic Provisioning for Hitachi Unified Storage 3 day ILT		TCI2626 - Introducing Hitachi Storage Architecture 2 day ILT	
TSI1950 - Advanced Provisioning for Hitachi Unified Storage 2 day ILT		CCI2288 - Hitachi Unified Storage VM Fundamentals 3 day ILT		2 Training Units	
		TSI2565 - Managing Hitachi Storage with Hitachi Command Suite v8.x 5 day ILT		3 Training Units	
		TSI2980 - Managing In-System and Remote Replications 5 day ILT		5 Training Units	
		CSI0147 - Hitachi Enterprise Storage In-Systems & TrueCopy Remote Replication 5 day ILT		5 Training Units	
		TSI2563 - Implementing Virtualization and Data Mobility Solution v8.x 5 day ILT		5 Training Units	
				TSI2728 - Managing Global-Active Device on Hitachi Virtual Storage Platform G Series 3 day ILT	3 Training Units

> Hitachi Flash Storage

TSC2765 – Managing Hitachi Flash Storage A200 Series 3 hour WBT	Free of Charge
--	----------------



> Hitachi Command Suite 1/2

Hitachi Command Suite 2/2

Virtualization

Installation and Support	Implementation and Integration	Architecting
--------------------------	--------------------------------	--------------

> Configuration and Provisioning

<p>TSI2562 - Hitachi Command Suite v8.x Installation and Configuration</p> <p>5 day ILT</p> <p>5 Training Units</p>	<p>TSI2565 - Managing Hitachi Storage with Hitachi Command Suite v8.x</p> <p>5 day ILT</p> <p>5 Training Units</p>	<p>TSI2597 - Architecting Storage Performance with Hitachi Storage Using Command Suite v8.x</p> <p>5 day ILT</p> <p>5 Training Units</p>
---	--	--

Administration

> Configuration and Provisioning

<p>TSI2565 - Managing Hitachi Storage with Hitachi Command Suite v8.x</p> <p>5 day ILT</p> <p>5 Training Units</p>	<p>TCV2837 - Getting Started with Hitachi Storage Advisor for Block and File</p> <p>15 minute video suite</p> <p>Free of charge</p>	<p>TSV2836 - Configuring the Hitachi Storage Advisor Environment with the Virtual Appliance Manager Tool</p> <p>3.5 minute video</p> <p>Free of charge</p>
<p>TSI2790 - Hitachi Storage Administration Software Technology Overview</p> <p>3 day ILT</p> <p>3 Training Units</p>	<p>TSI2929 - Managing Hitachi Storage Advisor</p> <p>2 day ILT</p> <p>2 Training Units</p>	

Installation and Support	Implementation and Integration	Administration	Architecting
--------------------------	--------------------------------	----------------	--------------

> Virtualization and Data Mobility

<p>TSI2562 - Hitachi Command Suite v8.x Installation and Configuration</p> <p>5 day ILT</p> <p>5 Training Units</p>	<p>TSI2563 - Implementing Virtualization and Data Mobility Solution v8.x</p> <p>5 day ILT</p> <p>5 Training Units</p>	<p>TSI2597 - Architecting Storage Performance with Hitachi Storage v8.x</p> <p>5 day ILT</p> <p>5 Training Units</p>
	<p>TSI2728 - Managing Global-Active Device on Hitachi Virtual Storage Platform G Series</p> <p>3 day ILT</p> <p>3 Training Units</p>	



Home



Products



Solutions



Certification



Add. Info

Foundation

Storage Systems

Storage Management

Data Protection

File & Content

Compute Platform

Infrastructure

Hitachi Command Suite 1/2

> Hitachi Command Suite 2/2

Virtualization

Installation and Support

Implementation and Integration

Administration

Architecting

> Performance and Analytics

TSI2562 - Installing and Configuring Hitachi Command Suite v8.x

5 day ILT

5 Training Units

TSI2596 - Managing Storage Performance with Hitachi Tuning Manager v8.x

4 day ILT

4 Training Units

TSI2597 - Architecting Storage Performance with Hitachi Storage v8.x

5 day ILT

5 Training Units

TSV2874 - Installing & Configuring Hitachi Infrastructure Analytics Advisor v2.0

3 hour Video

Free of charge

TSI2598 - Performing Advanced Operations with Hitachi Tuning Manager v8.x

3 day ILT

3 Training Units

TSI2421 - Using Hitachi Tuning Manager Predefined Reports

2 day ILT

2 Training Units

SSU2943 - Dynamic Threshold Storage Resource Monitoring with Performance Analytics Using HIAA

7 min Video

Free of Charge

TSC2835 - Managing Hitachi Infrastructure Analytics Advisor v2.x

1.5 hour WBT

Free of charge

TSV2834 - Managing Hitachi Data Center Analytics

1.5 hour video

Free of charge

TXI2900 - Managing Hitachi Performance Analytics

3 Day ILT

3 Training Units

Installation and Support

Implementation and Integration

Administration

Architecting

> Automation

TSU2889 - Setting Up and Submitting a Hitachi Automation Director Smart Provisioning Service

8 min Video

Free of Charge

TSI2690 - Managing Hitachi Automation Director v8.x

2 Day ILT

2 Training Units



Home



Products



Solutions



Certification



Add. Info

Foundation

Storage Systems

Storage Management

Data Protection

File & Content

Compute Platform

Infrastructure

Hitachi Command Suite 1/2

Hitachi Command Suite 2/2

> Virtualization

All Technical Roles

> Virtualization in VMware® Environments

TSI2847 - Configuring and Managing Hitachi Storage in a VMware Environment

5 day ILT

5 Training Units

> Virtualization in Microsoft® Environments

TSI2111 - Introducing Microsoft Private Cloud Solutions with Hitachi Storage

3 day ILT

3 Training Units







Home



Products



Solutions



Certification



Add. Info

Foundation

Storage Systems

Storage Management

Data Protection

File & Content

Compute Platform

Infrastructure

Modular Environments

Enterprise Environments

Mainframe Environments

> Data Protection

TSI2980 - Managing In-System and Remote Replications  
5 day ILT 5 Training Units

CSI0147 - Hitachi Enterprise In-System & TrueCopy Remote Replications  
5 day ILT 5 Training Units

TSI1595 - Hitachi Enterprise Storage Mainframe Replication  
5 day ILT 5 Training Units

TSI0150 - Implementing Hitachi Universal Replicator on Open Systems  
5 day ILT 5 Training Units

THI2230 - Using Hitachi Virtual Storage Platform G1x00 and F1500 with Mainframe  
5 day ILT 5 Training Units

TSE2630 - Migrating Data with Non-Disruptive Migration using HCS v8.x  
6 hour vILT 1 Training Unit

TSI2805 - Managing Hitachi Data Instance Director v5.x  
5 day ILT 5 Training Units

TSI2564 - Managing Replication Solutions v8.x  
5 day ILT 5 Training Units

TSI2599 - Scripting with PERL  
2 day ILT 2 Training Units



Hitachi Content Platform

Hitachi NAS Platform

> Hitachi File and Content

TCI2211 - Network Fundamentals

5 day ILT

5 Training Units

TSI1365 - Getting Started with the Hitachi Content Platform v7.x

6 hour vILT

1 Training Unit

TCI2910 - Managing Hitachi VSP Gx00/VSP Fx00 With NAS Modules and HNAS 4000 Series Systems

5 Day ILT

5 Training Unit

TCI2743 - Managing Hitachi Content Platform v7.2

3 day ILT

3 Training Units

TCI1125 - Managing Hitachi NAS Platform

3 day ILT

3 Training Units

TSI2650 - Operating and Managing Hitachi Data Ingestor 6.x

4 day ILT

4 Training Units

TCI2511 - Operating and Managing Data Protection and Data Migration on the Hitachi NAS Platform

2 day ILT

2 Training Units

TSI2459 - Operating and Managing Hitachi Content Platform Anywhere v 3.x

1 day ILT

1 Training Units

TCI2623 - Advanced Administration and Operation of Hitachi NAS Platform v12.x

3 day ILT

3 Training Units

TSI2764 - Introduction to REST API for Hitachi Content Platform

1 day ILT

1 Training Units

EMEA / APAC

AMER



Home



Products



Solutions



Certification



Add. Info

Foundation

Storage Systems

Storage Management

Data Protection

File & Content

Compute Platform

Infrastructure

Hitachi Compute Blade 500

Hitachi Compute Blade 2500

> Hitachi Compute Platform

THI2452 - Managing Hitachi Compute Blades 500 and 2500

3 day ILT

3 Training Units



Vendor Training Offerings

> Brocade® and Cisco® Training Offerings

The screenshot shows the Brocade website's user interface. At the top, there is a navigation menu with links for Products, Solutions & Technology, Services & Support, Education, Partnerships, and Company. Below the menu is a search bar. The main content area features a 'Log In' form with fields for 'User ID' (with an example 'e.g. John.Doe@brocade.com'), 'Password', and a 'Take me to:' dropdown menu set to 'MyBrocade'. A red 'LOG IN' button is positioned below the form. To the right of the login form is a 'Register with Brocade' section, which includes a 'register now >' button and text about registering for products and gaining access to MyBrocade. Below the registration section is a 'Security Advisories' link.

The screenshot displays the Cisco Partner Education Connection page. The top navigation bar includes links for Products & Services, Support, How to Buy, Training & Events, and Partners. The main heading is 'Partner Education Connection'. On the left, there is a sidebar menu with links for HOME, TRAINING & EVENTS, TRAINING RESOURCES (including Cisco Advanced Apprenticeships, Cisco Customer Loyalty, Cisco Digital Training, Cisco Learning Credits, Cisco Learning Services, Cisco Networking Academy, and Partner Education Connection), and Partner Education Connection. The main content area features a section titled 'What if the value-add was YOU?' with a sub-heading 'Get specialized knowledge. Earn certifications. Up your game. It's fast and easy with the Partner Education Connection.' Below this text is a 'Launch PEC' button. At the bottom of the page, there is a section titled 'Today is the first day of the rest of your career' with a 'Launch PEC' button and a paragraph of text describing the benefits of the Cisco Partner Education Connection.

Brocade and Cisco offer various Instructor-Led Trainings, Web Based Courses and Videos on their Products and Solutions, which you can access via their own Learning Portals.

If required, we could setup on request such Trainings at our own facilities if there is enough demand.

You could also use your [Hitachi Training Units](#) as payment method for any public scheduled Brocade / Cisco classes. In the Americas, this can be done through [Global Knowledge](#).

For further details and any other queries, please contact your regional [Hitachi Vantara Training Manager](#).



UCP for VMware®

UCP for Microsoft®

UCP for SAP HANA®

> Hitachi Unified Compute Platform

THC2366 - Exploring the Architecture of the Hitachi Unified Compute Platform

30 min WBT

Free of Charge

TXC2429 - Architecting Hitachi UCP Platform for SAP HANA Appliances

30 min WBT

Free of Charge

TSI2847 - Configuring and Managing Hitachi Storage in a VMware Environment

5 day ILT

5 Training Units

TSI2111 - Introducing Microsoft Private Cloud Solutions with Hitachi Storage

3 day ILT

3 Training Units

TCI2527 - Managing and Monitoring Hitachi UCP 4000 and 4000E for VMware vSphere

5 day ILT

5 Training Units

TCC2691 - Managing Hitachi UCP for Microsoft Private Cloud

1 hour WBT

Free of Charge



Pentaho Training (For more information on Pentaho Training go to: <http://www.pentaho.com/service/training>)

> Business Analytics and Dashboard

BA1000 Business Analytics User Console\*

1 day Online / Public Classroom See site for pricing

BA2000 Business Analytics Report Designer

2 day Online / Public Classroom See site for pricing

BA3000 Business Analytics Data Modeling

2 day Online / Public Classroom See site for pricing

CT1000 Fundamentals

2 day Online / Public Classroom See site for pricing

> Data Integration

DI1000 Pentaho Data Integration Fundamentals

3 day Online / Public Classroom See site for pricing

DI2000 Pentaho and Hadoop Fundamentals

2 day Online / Public Classroom See site for pricing

DI3000 Predictive Analytics with PDI and Weka

2 day Online / Public Classroom See site for pricing

> Embedded Analytics

SLN7000 – Advanced Security

2 Day Online / Public Classroom See site for pricing

SLN7100 – Embedding Pentaho

2 Day Online / Public Classroom See site for pricing

> Installation and Support

AD1000 – Installation and Administration

2 Day Online / Public Classroom See site for pricing

SP1000 – Support and Troubleshooting

1 Day Online / Public Classroom See site for pricing

\* BA1000 is a prerequisite for ALL capabilities

Hitachi training units can be used for Pentaho training, however training cards cannot be used.



Home



Products



Solutions



Certification



Add. Info

Storage Concepts

Storage Administration

Implementation – Business Analytics

Legend

Storage Concepts

> Self Study or Classroom Paths

Storage Concepts:  
Storing and Managing Digital Data  
Global Learning Book    Free PDF Download

CCI0110 – Hitachi Vantara  
Storage Concepts  
2 day ILT                      2 Training Units





HQT-0050 Hitachi Storage Concepts test

Kryterion - un-proctored

Hitachi Vantara  
Qualified Associate





Storage Administration	
<p>&gt; Course Attendance Required*</p>	
<p>TSI2565 - Managing Hitachi Storage with Hitachi Command Suite v8.x</p> <p>5 day ILT</p>	<p>5 Training Units</p>
<p> HQT-6740 test Storage Administration test</p>	<p>Kryterion - proctored</p>
<p>Hitachi Vantara Qualified Professional </p>	

INFRASTRUCTURE DOMAIN

\*Course attendance required when taking a HQT-xxxx test in the classroom at the completion of the course. Depending on the location and course delivery format, the test may be offered and administered by the instructor at the conclusion of the course. Alternatively, HQT-xxxx technical tests are also available at [Kryterion test centers](#) world-wide.





Home



Products



Solutions



Certification



Add. Info

Storage Concepts

Storage Administration

Implementation – Business Analytics

Legend

> Page 1/2

Page 2/2

Pentaho Business Analytics Implementation

Training available through Pentaho. Visit <http://www.pentaho.com/service/training> for more information on these suggested training opportunities.

> Course Attendance Recommended

BA1000 – Business Analytics User Console 1 Day Online / Classroom 1 Training Units	BA2000 – Business Analytics Report Designer 2 Day Online / Classroom 2 Training Units	BA3000 – Business Analytics Data Modeling 2 Day Online / Classroom 2 Training Units	AD1000 – Pentaho Installation and Administration 2 Day Online / Classroom 2 Training Units	SP1000 – Pentaho Support and Troubleshooting 1 Day Online / Classroom 1 Training Units
---	--	--	---	---



HCE-5910 Pentaho Business Analytics Implementation

Kryterion - proctored

Hitachi Vantara Certified Specialist 


BUSINESS ANALYTICS

Pentaho Business Analytics Implementation	Pentaho Data Integration Implementation
---	---

Visit <http://www.pentaho.com/service/training> for more information on these suggested training opportunities.

> Course Attendance Recommended

<p>BA1000 – Business Analytics User Console</p> <p>1 Day Online / Classroom    1 Training Units</p>	<p>DI1000 – Pentaho Data Integration Fundamentals</p> <p>3 Day Online / Classroom    3 Training Units</p>
<p>BA2000 – Business Analytics Report Designer</p> <p>2 Day Online / Classroom    2 Training Units</p>	<p>DI2000 – Pentaho and Hadoop Framework Fundamentals</p> <p>2 Day Online / Classroom    2 Training Units</p>
<p>BA3000 – Business Analytics Data Modeling</p> <p>2 Day Online / Classroom    2 Training Units</p>	<p> HCE-5920 Pentaho Data Integration Implementation exam Kryterion - proctored</p>
<p>AD1000 – Pentaho Installation and Administration</p> <p>2 Day Online / Classroom    2 Training Units</p>	<p><b>Hitachi Vantara Certified Specialist</b> </p> <p><b>BUSINESS ANALYTICS</b></p>
<p>SP1000 – Pentaho Support and Troubleshooting</p> <p>1 Day Online / Classroom    1 Training Units</p>	

 HCE-5910 Pentaho Business Analytics Implementation exam  
Kryterion - proctored

**Hitachi Vantara Certified Specialist** 

BUSINESS ANALYTICS





Customer Administration Solutions

> SAP HANA – Administration, Operations, and Support (SPS 08)

The following administration solutions training is available directly from SAP. Please use the link below to navigate to their site for scheduling, pricing, etc:

[SAP HANA - Administration, Operations & Support \(SAP HANA SPS08\)](#)

**Americas:** Use Hitachi training units to attend third-party training through [Global Knowledge](#)

HA100 - SAP HANA Introduction

2 Days Classroom

Contact SAP for Pricing

HA200 - SAP HANA

Installation and Operations

5 Days Classroom

Contact SAP for Pricing

OHA10 – OKP SAP High-Performance Analytic Appliance 1.0 (SAP HANA (1.0)

E-Learning

Contact SAP for Pricing

> VMware – vSphere: Install, Configure, Manage [V5.5]

The following administration solutions training is available directly from VMware. Please use the link below to navigate to their site for scheduling, pricing, etc:

[VMware vSphere: Install, Configure, Manage \[V5.5\]](#)

**Americas:** Use Hitachi training units to attend third-party training through [Global Knowledge](#)

Delivery Types: Classroom, Lab, Live Online, Self-Paced, vFlex-ILT, Products: VMware ESXi, VMware vCenter Server, VMware vSphere Roles: Administrator, Engineer

> Microsoft Hyper-V

The following administration solutions training is available directly from Microsoft. Please use the link below to navigate to their site for scheduling, pricing, etc:

[Course 55021A: Configuring and Administering Hyper-V in Windows Server 2012](#)

**Americas:** Use Hitachi training units to attend third-party training through [Global Knowledge](#)

> Oracle

The following administration solutions training is available directly from Oracle. Please use the link below to navigate to their site for scheduling, pricing, etc:

[Oracle Database Administration Training \(Select your database version\)](#)

**Americas:** Use Hitachi training units to attend third-party training through [Global Knowledge](#)

Additional Information

The way to get the best flexibility and value for training, and maximise the benefit and potential of your investment in Hitachi Vantara technology and skills.

> Training Unit

Hitachi Training Units help you protect your training budget, cover your organization from unexpected medium-term training requirements, and enable you to earn a valuable discount on volume purchases. One Training Unit typically allows for one person to attend a publicly scheduled, one-day instructor-led (ILT) course. It can also be exchanged for any Hitachi Vantara training product or service. You select the number of Training Units that best meet your training requirements, budget allowance and time restrictions.

> Terms

Training Units are valid for one year from the date of purchase and can be acquired in any number. All Hitachi Vantara education products and services are priced in Training Units as well as in local currency..

> What's Next ?

Contact your Hitachi Vantara Regional Training Manager for assistance in deciding how many Training Units or Training Cards you should purchase, that would best fit your training needs.



Americas



Europe, Middle East, and Africa



Asia Pacific



Additional Information

The way to get the best flexibility and value for training, and maximise the benefit and potential of your investment in Hitachi Vantara technology and skills.

> Training Card

Take advantage of unlimited instructor-led training (ILT) taught by storage experts. In addition, there is a wide range of convenient, virtual Instructor-led training (vILT) and web-based trainings (WBT). Hitachi Training Cards will help you protect your training budget and cover your organization from unexpected medium-term training requirements. Simplify your training budget with one, fixed-price Purchase and one purchase order.

> Terms

A Training Card is valid for one year from the date of purchase. The Training Card is non-transferable and must be used by the named Customer employee. The Training Card is used for any public scheduled training class in a Hitachi Vantara Global Learning Facility in the country of purchase. Training Cards are not used for on-site or customized training courses.

> What's Next ?

Contact your Hitachi Vantara Regional Training Manager for assistance in deciding how many Training Units or Training Cards you should purchase, that would best fit your training needs and timescales.



Americas



Europe, Middle East, and Africa



Asia Pacific



Additional Information

> Learning Center

The Hitachi Vantara Learning Center provides easy access to our instructor led, online and downloadable training and exams, as well as full support for Hitachi Vantara Certified Professional, and other qualification programs.



Access the Hitachi Vantara Learning Center via the following link: <https://learningcenter.hitachivantara.com>

The quickest way to find a course is to use the search box, which you will find at the top right of the screen. As you start to type in your search, results will start to appear. You can also simply enter the course code!

If you hit the enter key now, the full list becomes available together with course descriptions, so you can easily select the right course.

To register for a course, click on the course title. If it is a web-based training course where no payment is required, you will be taken to a screen where you can directly launch the course. If it is an instructor-led event, you will then need to select which session you wish to attend. Click on the sessions tab and all available classes will be shown. You can then select the class and confirm payment type.

In order to access to the Hitachi Vantara Learning Center (LMS), all customers and partners need to have an account in the Hitachi Vantara portal database. If you don't have a valid Hitachi Vantara Portal account yet, please self-register via the following link [https://sso.HitachiVantara.com/en\\_us/user-registration.html](https://sso.HitachiVantara.com/en_us/user-registration.html).

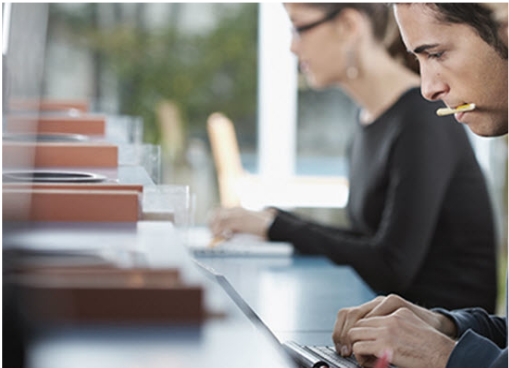
For any questions on this process contact: [Globallearninghelp@hitachivantara.com](mailto:Globallearninghelp@hitachivantara.com)



Additional Information

> Course Descriptions

A detailed course description is available for each of our courses. You can get a particular course description from the Hitachi Vantara Learning Center. Here are the simple steps.



Access the Hitachi Vantara Learning Center via the following link:

<https://learningcenter.HitachiVantara.com>

Search for the course you're looking for by keyword or course code. Select a course, and a full list becomes available with a course description, so you can easily select the right course.

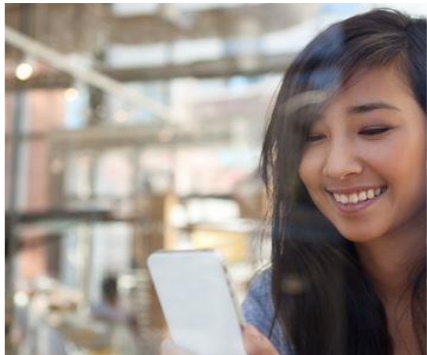
A PDF of the full course description is available under resources at the bottom of the screen.





Additional Information

> Contact



The Hitachi Vantara Global Learning team looks forward to supporting you with all your Hitachi Vantara training requirements,. Please contact your Regional Training Manager, or e-mail us at one of the following geography based addresses:

We look forward to setting up and facilitating your training deployments including training needs assessments, development of training and certification plans, and training delivery scheduling.

 [Americas](#)

 [Europe, Middle East, and Africa](#)

 [Asia Pacific](#)

> Join the Community

