

Lesson 5

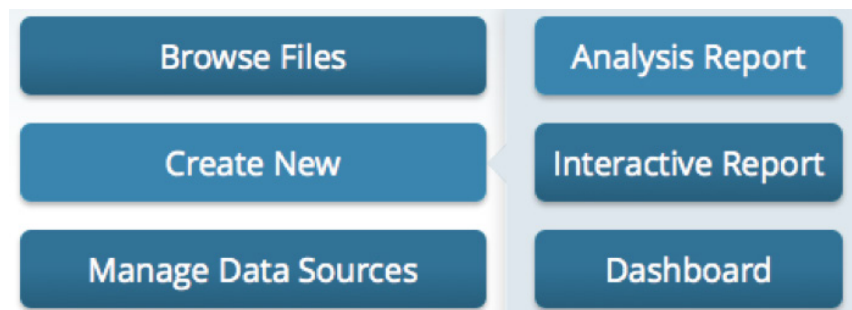
Creating a Dashboard

With Pentaho dashboards users can create meaningful reports that can be linked and filtered with a few clicks. In this lesson, you will learn how to create and save a Pentaho dashboard. Note – This lesson assumes you have already created specific analyzer reports and charts in Lesson 4: “Creating an Analyzer Report.”

Beginning in the Home Perspective of the Pentaho User Console, click “Create New”, then click on the “Dashboard” option. If you have other reports open, or you are in another perspective of the User Console, this same functionality can be accessed from the File menu on the menubar by clicking the “New Dashboard” option.

Step by Step with Pentaho:

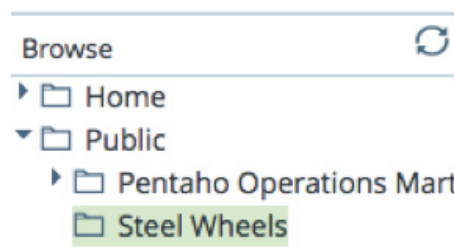
1. Click on Create New, then click Dashboard



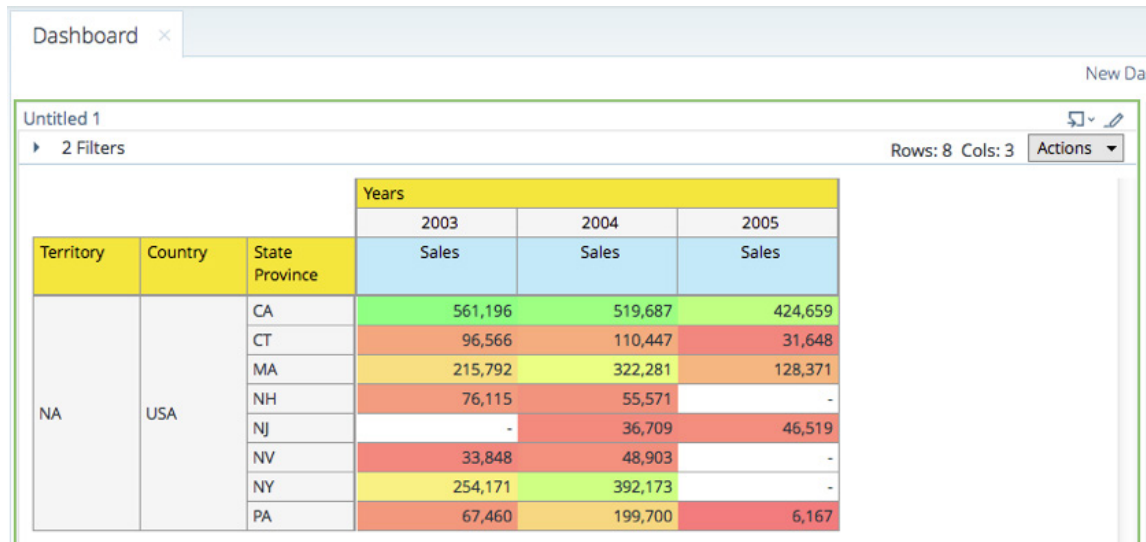
Notice the design panel consists of blank panels with a template strip at the bottom of the screen. We are going to build a dashboard with 3 panels. Please select the “2 over 1” template. You will see the screen change to the template.



You can create a dashboard from previously created content or new content. For our example, we will assemble a dashboard by using previously created analysis views and report. The content browser at the left side of the designer allows us to browse the repository and select from existing content to assemble our dashboard.



Find and select the Steel Wheels directory under Public. If you look at the bottom panel under the directory, you will see a list of reports. Among these reports are the two reports that you created during Lesson 4 on Pentaho Analyzer. Please drag the "MySalesReport" to the top left panel titled "Untitled 1". When the report is placed, you will see the content of the report render.



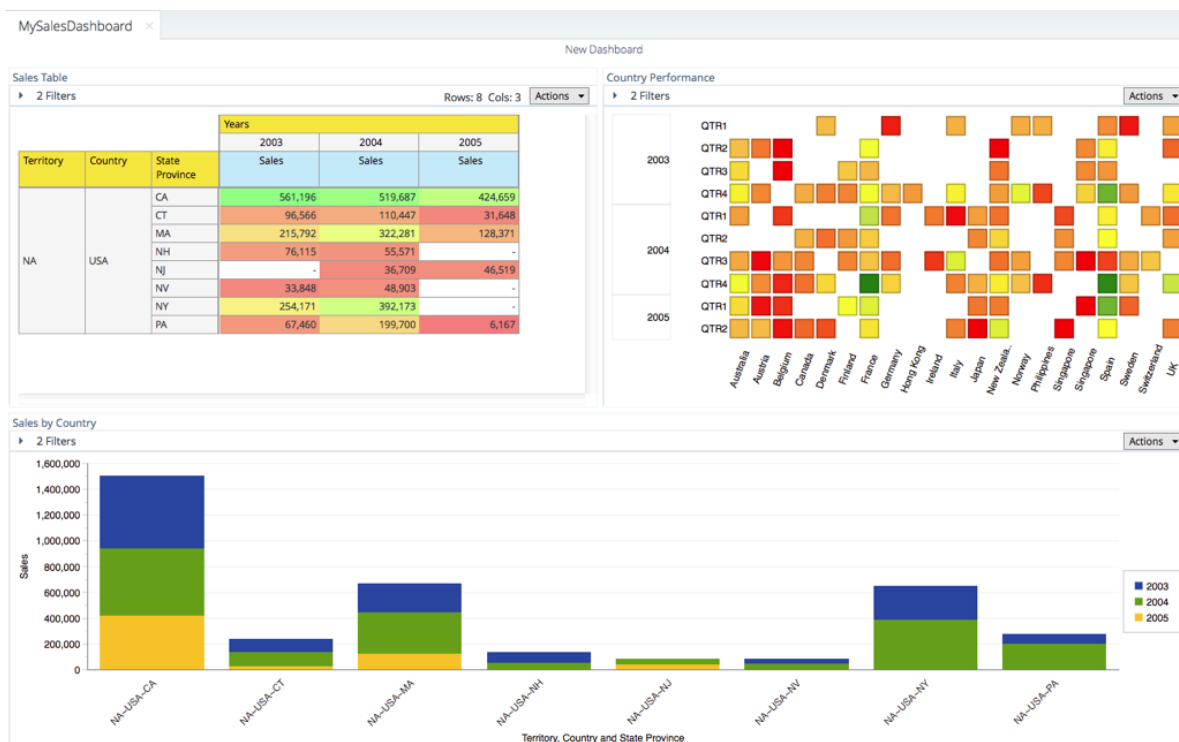
			Years		
			2003	2004	2005
Territory	Country	State Province	Sales	Sales	Sales
NA	USA	CA	561,196	519,687	424,659
		CT	96,566	110,447	31,648
		MA	215,792	322,281	128,371
		NH	76,115	55,571	-
		NJ	-	36,709	46,519
		NV	33,848	48,903	-
		NY	254,171	392,173	-
		PA	67,460	199,700	6,167

Please change the "Title" description on the bottom panel to "Sales Table" and click "Apply". Now drag "MySalesChart" to the bottom panel titled "Untitled 3". Scroll down a bit and notice the report has rendered in the panel. Scroll down a bit, and you can see that the chart is rendered in the Panel. Please change the "Title" description on the bottom panel to "Sales by Country" and click "Apply".

Now find the "Country Performance (heat grid)" report. Scroll to the top of the window and drag the report to the upper right panel titled "Untitled 2". Please change the "Title" description on the bottom panel to "Country Performance" and click "Apply". Click the "Save" icon in the tool bar. Select the root directory from the Location drop down. Now double click the "public" directory, then double-click the "Steel Wheels" directory. Save your report as "MySalesDashboard". Click the "Edit Button" in the tool bar to get out of edit view.

Step by Step with Pentaho:

1. Select 2 over 1 in the bottom template panel
2. Click on "Steel Wheels" directory.
3. Drag "MySalesReport" to upper left panel.
4. Change the Title to "Sales Table" and click Apply.
5. Drag "MySalesChart" to lower panel.
6. Change the Title to "Sales by Country" and click Apply.
7. Drag "Country Performance (heat grid)" to upper right panel.
8. Change the Title to "Country Performance" and click Apply.
9. Click the Save button on the toolbar.
10. Navigate to the Steel Wheels directory.
11. Save the dashboard as "MySalesDashboard".
12. Click the Edit pencil to leave Edit mode.



Congratulations!! You have created your first dashboard. To find out more information about the powerful Pentaho platform try another lesson or contact Pentaho and start your free proof of concept with the expertise of a Pentaho sales engineer and your data. Contact Pentaho at www.pentaho.com/contact.

Hitachi Vantara



Corporate Headquarters
2845 Lafayette Street
Santa Clara, CA 95050-2639 USA
www.HitachiVantara.com | community.HitachiVantara.com

Regional Contact Information
Americas: +1 866 374 5822 or info@hitachivantara.com
Europe, Middle East and Africa: +44 (0) 1753 618000 or info.emea@hitachivantara.com
Asia Pacific: +852 3189 7900 or info.marketing.apac@hitachivantara.com

HITACHI is a registered trademark of Hitachi, Ltd. VSP is a trademark or registered trademark of Hitachi Vantara Corporation. IBM, FICON, GDPS, HyperSwap, zHyperWrite and FlashCopy are trademarks or registered trademarks of International Business Machines Corporation. Microsoft, Azure and Windows are trademarks or registered trademarks of Microsoft Corporation. All other trademarks, service marks and company names are properties of their respective owners.